

# Your solution, Our priority

[www.edagroup.com.gh](http://www.edagroup.com.gh)



Established 2014

# About Us

EDA Logistics Limited is a fast growing and vibrant key player in the Logistics industry which is based in Ghana. As a world-class provider of innovative logistics and supply-chain services and solutions, EDA Logistics has an extensive network of more than 5 offices in over 3 countries. EDA Logistics Limited operates from Ghana's main ports of Accra (Tema) and Takoradi and offers total logistics solutions to exporters and importers. EDA Logistics Limited has worked for some of the key industry players which include but not limited to the following: Odebrecht, Queiroz Galvão, MSF Construction, Swedish Machinery & Trucks Ghana Ltd (SMTGroup), 3 Mac Ghana Ltd, AQ Gold Ghana, AKA Petroleum Ghana, Amandi Construction, Sinohydro, CJIC, etc.

Providing advanced customer-specific solutions through our value-creating services and IT technology in freight forwarding, import & export management, EDA Logistics' comprehensive service network and platforms will allow you to make all the right decisions for your business.

Our dedicated and experienced professionals always provide you with tailor-made logistics solutions, customized to your particular needs. EDA Logistics focuses on serving customers with global sourcing, brokerage and supplychain-management needs, creating value through innovative end-to-end international logistics programs. We are also a leader in providing sophisticated transportation, warehousing, bulk cargo discharge, haulage, equipment rental and door-to-door distribution services in the mainland Ghana, offering professional and efficient solutions.

# Vision

Where we are headed

Become a first-class logistics company in Africa and beyond.

# Mission

Why we exist

To satisfy the logistic needs and requirements of our customers by providing high quality of supply-chain management solution services.

# Values

How we serve & deliver

- Excellence
- Integrity
- Safe & Friendly Environment
- Professionalism
- Ethics
- Growth

# Values

## Excellence

Giving the best and unmatched results for all round satisfaction in all services to our clients. We deliver value to our cherished clients around the globe. Your solution, Our priority!

## Integrity

To act with honesty and sincerity without compromising the truth. We make commitments and deliver on our promise.

## Safe & Friendly Environment

Provide an open, honest and constructive workplace as well as promote a fun work environment.

## Professionalism

Maintaining high level of discipline and standards at all times. We are efficient, effective and responsive.

## Ethics

We believe that ethical business practices define the character of our company. Every employee upholds the highest standard of conduct within the area of responsibility.

## Growth

We believe that continuous improvement of people and processes is the key driver to success. We strive for progress by maintaining a culture that encourages and rewards employee's growth.



# Services

## Freight Forwarding

With personalized services, we can handle your shipment regardless of size, point of origin or destination. Through our comprehensive logistics services division, we can offer you the following services, which you may elect to use individually or as a package:

- Shipment Booking
- Bill of Lading Preparation

## Custom Clearance

EDA Logistics handles every aspect of gateway clearance and delivery for you, communicating with customs officials and offering you the most appropriate distribution options. We compile accurate declarations and pay duties and taxes on your behalf. We offer a range of added value services to assist with processing and distribution of your goods.

## Warehousing Service

Having a strong distribution and warehousing strategy is critical to your success in today's global environment. Our integrated supply-chain solutions can help reduce





your inventory levels and logistics costs. It allows you to react to rapid changes in the marketplace while minimizing your investment risks and operational costs.

## Brokerage Service

We will help you, as we do for many shippers across the country, optimize the movement of freight through your supply-chain. Manufacturers, distributors and e-trailers alike have found a partner in EDA that provides dedication to service, honest communication and the ability to consistently drive savings directly to the bottom-line.

## Bulk Cargo Discharge

We have a long history of working with a wide range of stakeholders in the project cargo, heavy-lift, semi-submersible and break bulk sectors. As a supplier of a number of support services to the extraction industries in West Africa in it's own right, we fully understand the crucial role that project cargo plays in the region's infrastructure development.

## Consolidation

This includes sea, air and road freight. This involves the cargo transportation to the staffing point, custom process of shipping documents and finally re-packing if necessary for delivery. We follow all the customer





requirements in the shipping instructions given to us and take care of the cargo warehousing, securing and loading in to the container.

## Haulage

We operate throughout the length and breadth of Ghana and to other destinations in the West African sub-region. We also transport commodities like lime for mining companies in West Africa and also steel products, fertilizer, chemicals, consumables, etc. from the two sea ports to destinations within the country and the sub-region.

## Shipping Agency

Our culture is service excellence. We are dedicated to providing an exceptional level of shipping service to our clients. From our Ghana head office in Tema, we offer excellent shipping services. We either operate out of our own offices or via a proven sub-agency network throughout Ghana.

## Equipment Rental

EDA Logistics offers some equipment for rental whenever you need a tool, but do not want to go through the expense of purchasing, maintaining and storing your own. We have them all!

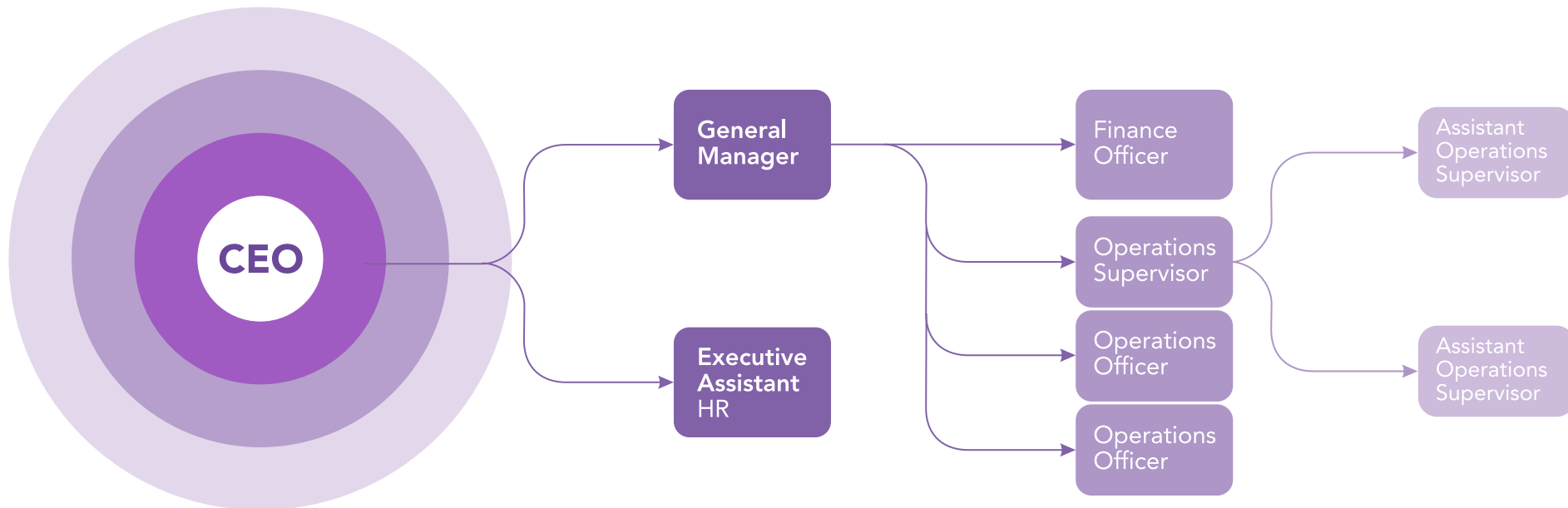


# Global Services

EDA Logistics is a worldleader in global logistics for companies of all sizes. We maximize the reach of your international sales and distribution efforts, offering consultation and operations for a seamless supply-chain solution!



# Organogram







# The Official Ghanaian Partner

**RUBiSERES**

*Asphalt*

*Bitume*



# Introduction to RUBiS | ERES

Rubis Asphalt Middle East (RAME) is the head structure of the Rubis Group bitumen subsidiaries Eres, market leaders in West and Central Africa.

## Activities

- Sourcing bitumen in Europe, the USA and Asia.
- Shipping bitumen into our own terminals in Western & Central Africa with our own fleet of bitumen carriers.
- Storing bitumen in our import terminals located in Dakar, Lomé, Sapele, Port Harcourt and Douala.
- Distributing to contractors paving Penetration Grade bitumen
- Bitumen, emulsions and cutbacks with our own delivery means, bitu-containers and road tankers Possible Incoterms : FCA terminal, DAP or DDP contractor site.

## Why choose RUBiS Asphalt

Rubis Asphalt counts as the market leader in door-to-door delivery of bitumen in West and Central Africa, we guarantee far reaching expertise and diligence to our customers, with a fully controlled supply-chain from the refinery to the client sites, asphalt mixing plants or binder plants.

Over 500 experienced employees at your service to come up with creative solutions to meet any special requirement.

Our organization is based upon permanently available bulk stock in our terminals combined with our fleet of over 1200 bitu-containers and over 160 bitumen tank trailers constitute the most suitable logistical solution to approach African markets and transport bitumen to end users.

## Bitumen Shipping

- Four owned vessels in operation with total capacity >122,000 MT DWT

Vessel	DWT
BITU Atlantic	50,805 MT
BITU Express	49,282 MT
Viveka	9,776 MT
Biskra	12,509 MT

- Over 400,000 MT/Year of bitumen grades shipped to terminals in Senegal, Togo, Nigeria, Cameroon





and Gabon.

- Over 100,000 MT/Year traded outside Africa

## Focus on ERES Togo for distribution in Ghana

- 58 Employees
- 6 Insulated Bitumen Vertical Storage Tanks (36,000 MT capacity)
- Emulsions and Cutback Plants
- Laboratory
- 27 Insulated Road Tankers
- 470 Bitu-Containers
- 120,000 MT of bitumen distributed from Lomé Terminal

## RAME & ERES Solution Advantages

- Easy to manipulate (crane)/Special ERES design



- sturdy and safe
- Used for transportation, storage and binder supply to the asphalt plant. Reusable (no packaging waste - environmentally friendly)
- Easy use with conventional diesel burners
  - <sup>1</sup> *Economic Diesel*
  - <sup>2</sup> *Double jacketed heating tubes inside to avoid bitumen tempering*
  - <sup>3</sup> *Low energy consumption : 240-260 liters of diesel (27MT from 30 to 150°C)*
  - <sup>4</sup> *14-16 hours of heating*
  - <sup>5</sup> *Flexible and easily movable*
- Low manpower requirement
- Low loss of product
- Low stealing risk with hot product only when in use at client site
- Can be combined with road tankers deliveries for maximum flexibility
- Easy return of the empty containers with the trucks delivering the full containers (up to 2 empty containers per truck)



# RUBiS Asphalt Sales & Marketing Director, Ghana

Eric Akukumah is the CEO of EDA Logistics and the Country Director for RUBiS Asphalt for the past three years.

He is a graduate from the University of Ghana Business School with a Master of Science degree in International Business. Eric has very rich industrial experience in shipping and logistics management, which spans over a decade.

He has in the past worked with Grimaldi Ghana Limited and BV Shipping Limited. His international exposure, corporate experience and knowledge in international business gives him the competitive edge to transact business with different cultures.

Eric has strong adaption skills and a customer centric culture which underpins his business philosophy.



**Eric Akukumah**

RUBiS Country Director, Ghana







## What we do

EDA Logistics is a positive social impact-oriented company and as such, we target the most vulnerable in various marginalized communities with social projects that will create awareness and assist children, the youth and the less privileged in these communities in Ghana and beyond with the entrepreneurial drive and mindset.

One way by which we achieve this is through the provision of educational support. Eric, our leader and captain who personally has an experience of a challenging past, is always looking out for an opportunity to help individuals in vulnerable situations. He has an altruistic nature, with a strong passion to make a positive social impact.



'Ακρε'

*Thank you*